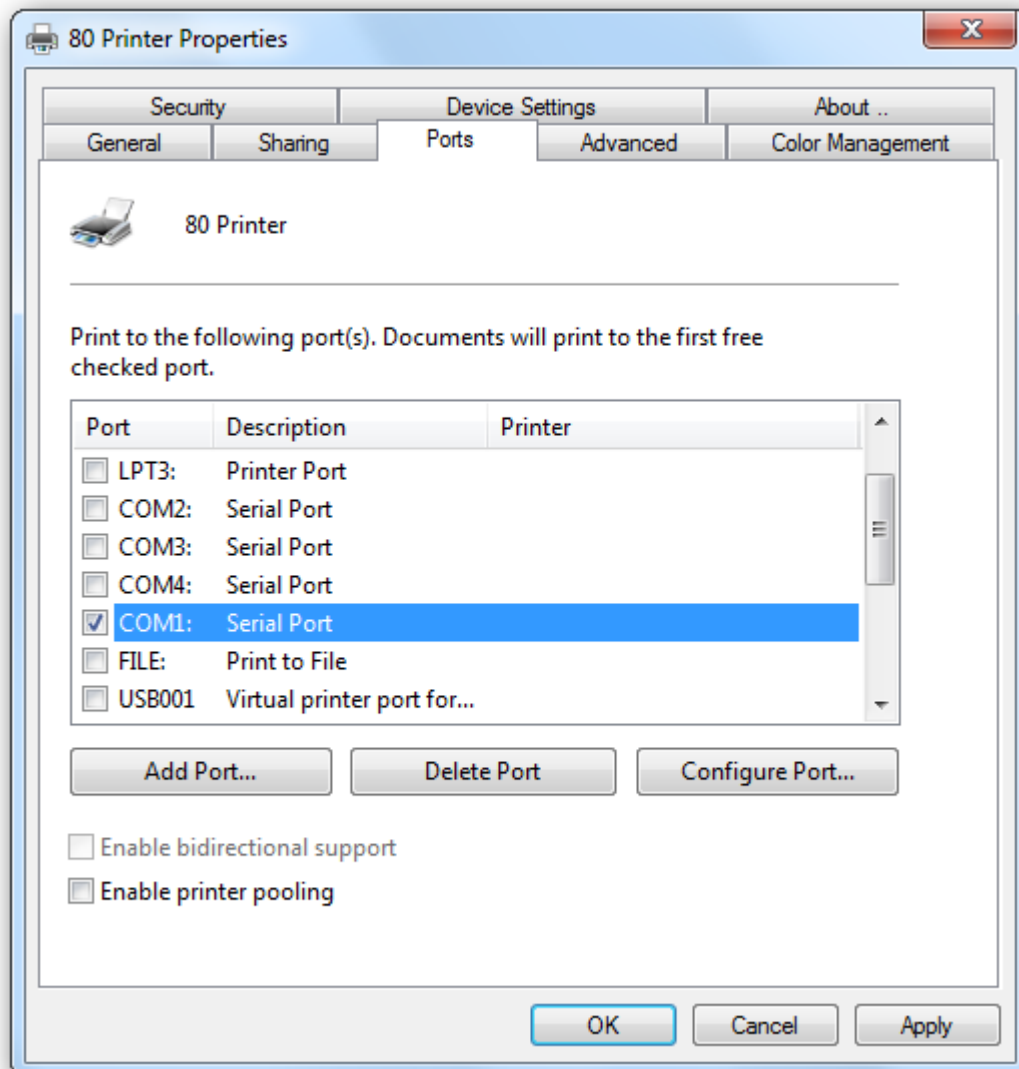


## How to setting and testing the printer's black mark function.

**Prerequisite: the computer has installed the printer driver already.**

Operation Notice:

1.To set up the port in the Printer Properties, ex: COM1.



2.Open black demo.exe and choose the printer which has been set up the port.

1.Click"Enable" to start the black mark demo, the printer would make a sound "beep" if success.

**2.after Enable, turn off the power supply and reboot, then starts to set up the black mark data.**

3.Input the length of black paper, the data should be longer than real length. Ex: the black paper length is 200mm then the set up data could be 400mm. After that, click "SET", the printer would make a sound "beep" if success.

### 3.Install and test instruction

4.Input the width of black paper, the data should be wider than real width. Ex: the black paper width is 10mm then the set up date could be 20mm. After that, click "SET", the printer would make a sound "beep" if success.

5.Input the data of page start after black mark. After that, click "SET", the printer would make a sound "beep" if success.

6.Input the date of cut after black mark. After that, click "SET", the printer would make a sound "beep" if success.

After the set up of black mark data, please click "Go to next black page" and "Go to next cut position" to check the black page and cut position.

4.Please close the black mark function if use the thermal paper that without it. Otherwise, the printer would make error because it could not search for the black mark. The printer would make a sound "beep" for eight times if the function of black mark is wrong.